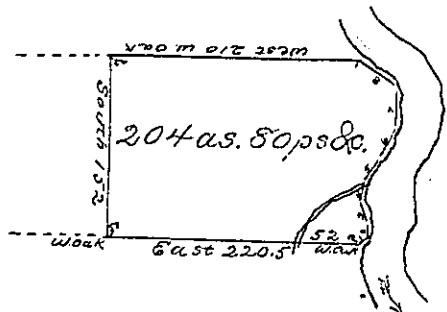


John Reese

Courses & distances up
creek from W. Oak.

- No. 1. N. 34 E. 6
- 2. N. 7 W. 11
- 3. N. 23 W. 27
- 4. N. 23 E. 14
- 5. N. 26 E. 25
- 6. N. 30 E. 24
- 7. N. 5 W. 30
- 8. N. 49 W. 42 to post.

Stephen Olney Jr.



Abraham Thompson

C 162 286

Draft of a tract of land situate in Cone-
wango township, Warren county, west of and adjoining
Conewango Creek. Surveyed 29th. September 1820, for
Charles Dougherty, on improvement and settlement

John Irwin L.S.

Jacob Spangler Esqr.
Surveyor General of Pa. }

IN TESTIMONY that the above is a copy of the original remaining on file in
the Department of Internal Affairs of Pennsylvania, made
conformably to an Act of Assembly approved the 16th day of
February, 1833, I have hereunto set my Hand and caused
the Seal of said Department to be affixed at Harrisburg,

this fifth day of June 1900

James W. Latta
Secretary of Internal Affairs.